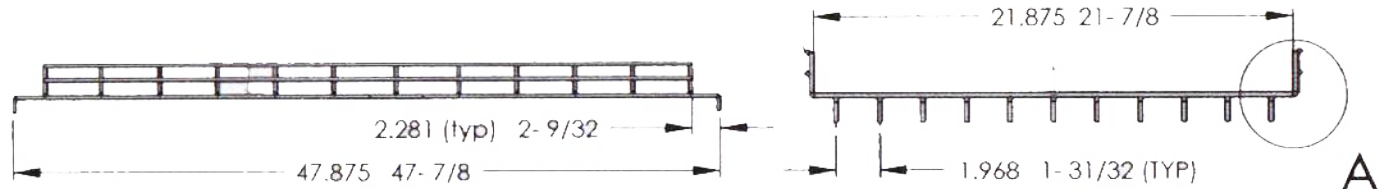
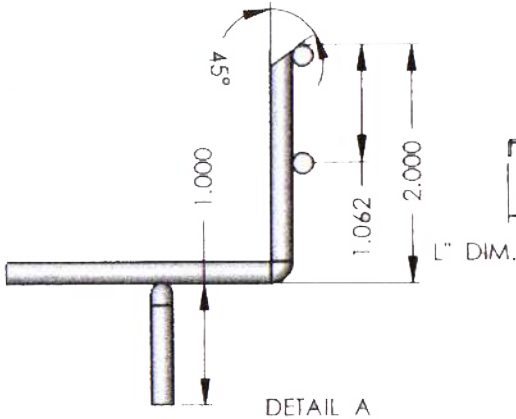
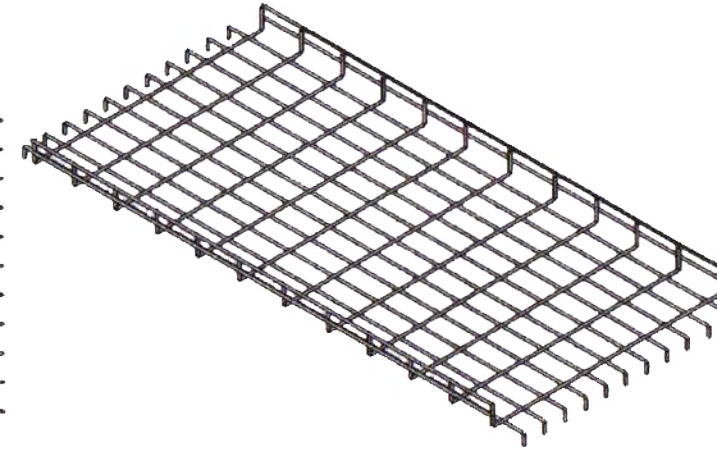
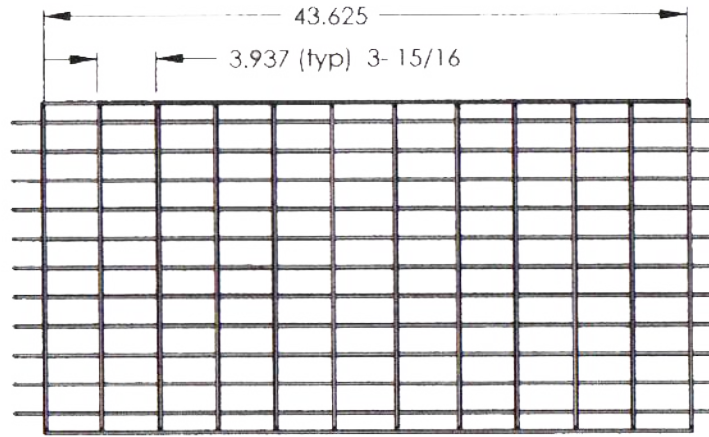


GENERAL NOTES:

- A) MATERIAL TO BE HOT DIPPED, PRE-GALVANIZED STEEL, ASTM A641, TO AVOID THE FORMATION OF ZINC WHISKERS.
- B) FINISH: (CARBON STEEL WIRE ONLY)
 - 1) POLYESTER POWDER COATING 1.2 - 3.0 MILS THICK.
- C) DIMENSIONAL TOLERANCES
 - 1) GENERAL DIMENSIONS +/- 1/8" U.N.D.
 - 2) LENGTH +/- 1/4"
 - 3) WIDTH +/- 1/8"
 - 4) DEPTH +/- 1/8"
 - 5) ANGULAR FORMATION +/- 3 DEG.
 - 6) CAMBER SHALL NOT EXCEED 1/2" ON STANDARD 10' LENGTH.
 - 7) TWIST SHALL NOT EXCEED 1/2" ON STANDARD 10' LENGTH
- D) RIB VICE DIAMETER
 - 1) .197 (5MM) DIAMETER.
- E) LONGITUDINAL WIRE DIAMETER
 - 1) .197 (5MM) DIAMETER
- F) CROSS SECTION AREA
 AREA = (20 WIRES X .0438 IN²)= 876 IN²
 UL MARKING = .8 IN²

COMPONENT LIST			
L" DIA.	ITEM	MAKE FROM	DESCRIPTION
		P/N FT XX 24X48	CO WIRE .196 DIA.
2"		2X24X48	
4"		4X24X48	
6"		6X24X48	



UNLESS OTHERWISE SPECIFIED DIMENSIONS ARE IN INCHES.				DEBUR AND BREAK SHARP EDGES	
REVISION	NAME	CHANGE	DATE		
A	AF		5-12-10		
				MATERIAL:	
				WEIGHT:	



TITLE: **FLOORFLEX-TRAY**

DWG NO.: **FT XX 24 X 48**

SHEET 1 OF 1